



Aluminum & Plastic Conduit Bodies

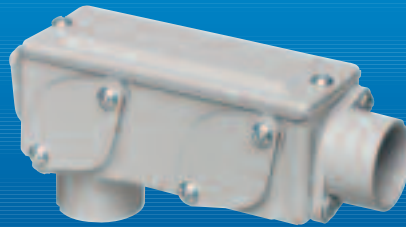
Maintain weather-tight seal for exterior use

NEW!
See reverse

AnyBODY ships as an LB



#930
1/2" Metal

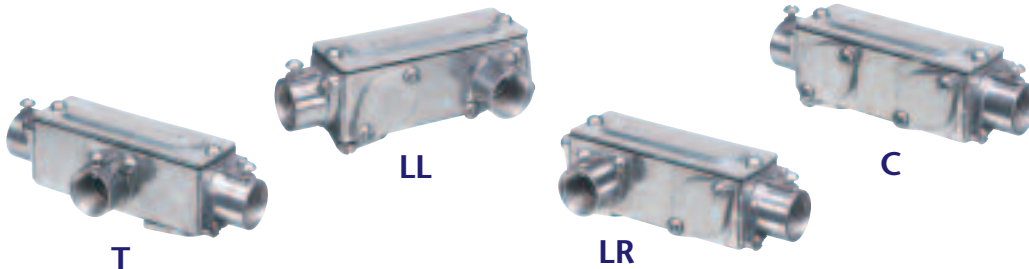


#930NM
1/2" Plastic



#935NM
2" AnyBODY™ Conduit Body

But converts to a T, LL, LR or C **FAST!**



Arlington's aluminum or plastic AnyBODY™ ships as an LB, but converts to a T, LL, LR or C by switching the covers and hubs to create the style you need.

It's easy – and convenient.

Plus, it saves you the hassle, space, and cost of stocking five different conduit bodies.

They're competitively priced with LBs with NO EXTRA COST for the normally more expensive T – and UL/CSA Listed.

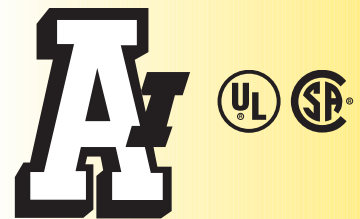
Plastic

- Sizes 1/2" to 4"
- Includes three non-metallic hubs with glue-in conduit joint

Aluminum

- Sizes 1/2" to 4"
- Includes threaded hubs for three openings
- 1/2" to 2" are combination EMT/rigid – they're threaded for rigid, but also have a set-screw for use with EMT
- Seated O-rings maintain weather-tight seal

It's all anybody needs to save time & money!



Arlington

1 Stauffer Industrial Park
Scranton, PA 18517

800/233.4717

Fax 570/562.0646

www.aifittings.com Patent pending

Meets NEC 2005 314.16 (c) (2) for Conduit Bodies with Splices, Taps or Devices.