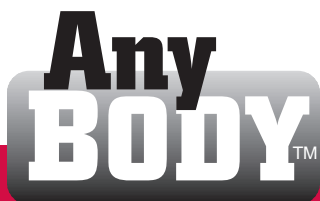


NEW!
See
reverse



Aluminum Conduit Body

It's Any Body You Want It To Be!

AnyBODY ships as an LB



#930
1/2" AnyBODY™ Conduit Body

Just switch the covers and threaded flanges as needed to create the style you need – T, LL, LR or C.

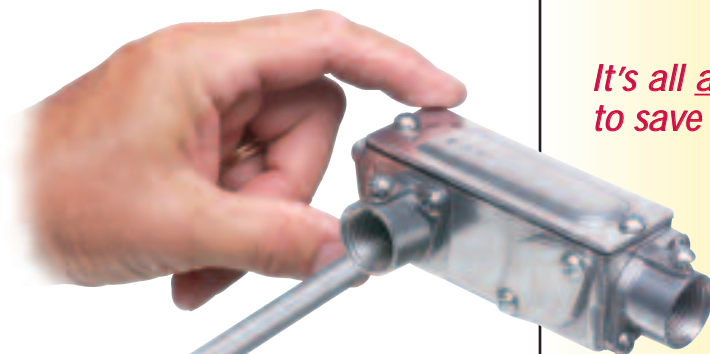
It's easy – and convenient.

Plus, it saves you the hassle, space, and cost of stocking five different conduit bodies.

- Sizes: 1/2" to 4"
- Includes threaded flanges for three openings
- 1/2" to 2" sizes are combination EMT/rigid – they're threaded for rigid, but also have a set-screw for use with EMT
- Competitively priced with LBs. There's **NO EXTRA COST** for the normally more expensive T
- UL and CSA Listed

But converts to a T, LL, LR or C

FAST!



It's all anybody needs to save time & money!



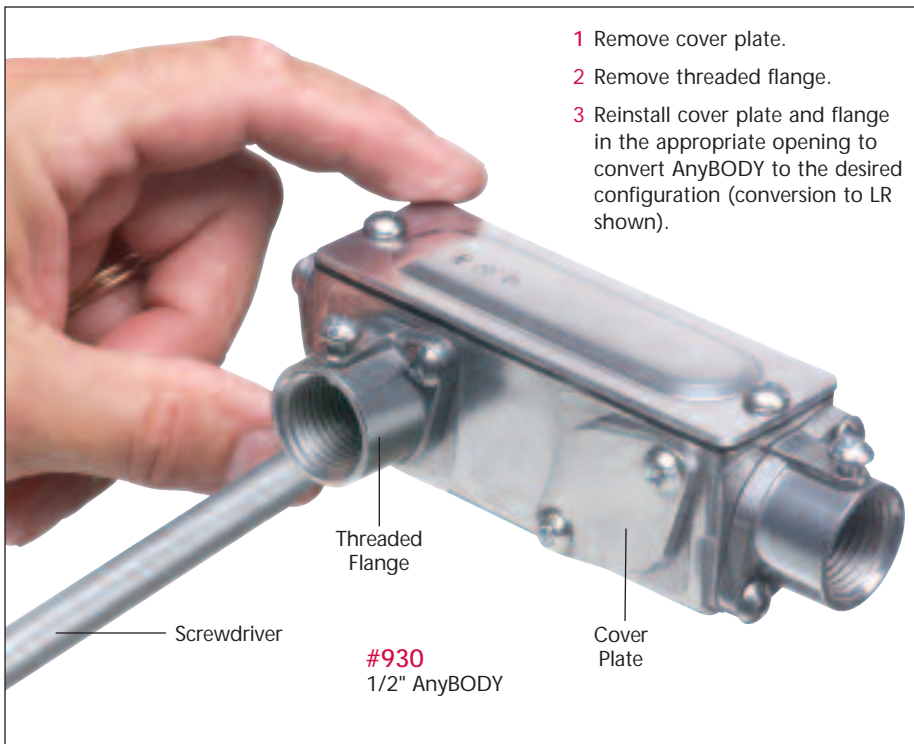
Arlington
1 Stauffer Industrial Park
Scranton, PA 18517
800/233.4717
Fax 570/562.0646
www.aifittings.com Patent pending

Meets NEC 2005 314.16 (c) (2) for Conduit Bodies with Splices, Taps or Devices.



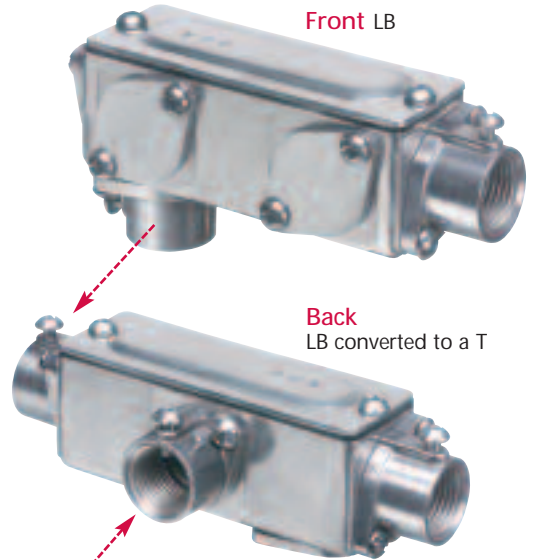
Aluminum Conduit Body

Five Conduit Bodies in One!



- 1 Remove cover plate.
- 2 Remove threaded flange.
- 3 Reinstall cover plate and flange in the appropriate opening to convert AnyBODY to the desired configuration (conversion to LR shown).

Convert AnyBODY from an LB to a T – or a C, LR, LL the EASY WAY!

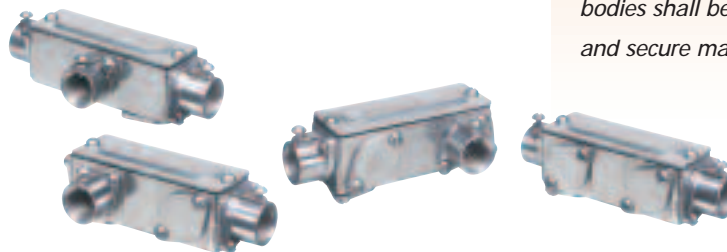


Remove cover. Substitute supplied flange.

Catalog Number	UPC/DEI/NAED Mfg. #018997	Description Aluminum Conduit Body	Size	Unit Pkg	Std Pkg
930	17900		1/2"	10	10
931	17901	AnyBODY™	3/4"	10	10
932	17902	with Set-Screw	1"	5	5
933	17903	and	1-1/4"	2	10
934	17904	Threaded Flange	1-1/2"	2	10
935	17905		2"	1	5
936	17906	AnyBODY™	2-1/2"	1	1
937	17907	for Rigid Only	3"	1	1
938	17908	(w/ Threaded Flange)	3-1/2"	1	1
939	17909		4"	1	1

AnyBODY Meets NEC 2005 Section 314.16 Paragraph (C) (2) for Conduit Bodies with Splices, Taps or Devices.

"Only those conduit bodies that are durably and legibly marked by the manufacturer with their volume shall be permitted to contain splices, taps or devices. The maximum number of conductors shall be calculated in accordance with 314.16 (B). Conduit bodies shall be supported in a rigid and secure manner."



Distributed by