

Aluminum AnyBODY™

CONVERSION CHART



Arlington's Aluminum AnyBODY universal conduit body includes the parts you need to easily convert it into any body you need!

Includes cover and gasket.

Reduce Inventory!

AnyBODY™ Conduit Bodies ship as LBs

but convert to a T, LL, LR, or C – FAST!

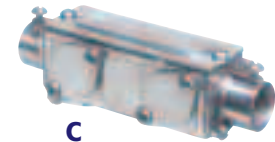


Arlington

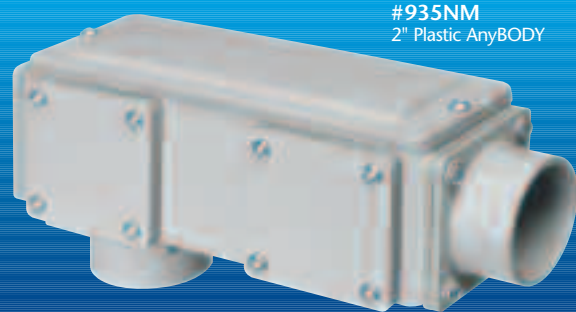


800/233-4717 • www.aifittings.com

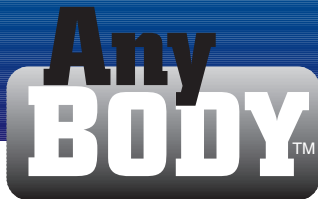
AnyBODY Cat. No.	Size	Aluminum AnyBODY replaces these Arlington parts, reducing your inventory!					Also replaces these products from other manufacturers
		Body only & Body w/ Cover & Gasket (suffix CG)					
930	1/2"	9310LB 9310LBCG	9410T 9410TCG	9510LL 9510LLCG	9610LR 9610LRCG	9710C 9710CCG	1/2" LB, 1/2" T, 1/2" LR, 1/2" LL, 1/2" C Set-screw, EMT or Rigid
931	3/4"	9311LB 9311LBCG	9411T 9411TCG	9511LL 9511LLCG	9611LR 9611LRCG	9711C 9711CCG	3/4" LB, 3/4" T, 3/4" LR, 3/4" LL, 3/4" C Set-screw, EMT or Rigid
932	1"	9312LB 9312LBCG	9412T 9412TCG	9512LL 9512LLCG	9612LR 9612LRCG	9712C 9712CCG	1" LB, 1" T, 1" LR, 1" LL, 1" C Set-screw, EMT or Rigid
933	1-1/4"	9313LB 9313LBCG	9413T 9413TCG	9513LL 9513LLCG	9613LR 9613LRCG	9713C 9713CCG	1-1/4" LB, 1-1/4" T, 1-1/4" LR, 1-1/4" LL, 1-1/4" C Set-screw, EMT or Rigid
934	1-1/2"	9314LB 9314LBCG	9414T 9414TCG	9514LL 9514LLCG	9614LR 9614LRCG	9714C 9714CCG	1-1/2" LB, 1-1/2" T, 1-1/2" LR, 1-1/2" LL, 1-1/2" C Set-screw, EMT or Rigid
935	2"	9315LB 9315LBCG	9415T 9415TCG	9515LL 9515LLCG	9615LR 9615LRCG	9715C 9715CCG	2" LB, 2" T, 2" LR, 2" LL, 2" C Set-screw, EMT or Rigid
936	2-1/2"	936LBCG	946TCG	956LLCG	966LRCG	976CCG	2-1/2" LB, 2-1/2" T, 2-1/2" LR, 2-1/2" LL, 2-1/2" C Rigid
937	3"	937LBCG	947TCG	957LLCG	967LRCG	977CCG	3" LB, 3" T, 3" LR, 3" LL, 3" C Rigid
938	3-1/2"	938LBCG	948TCG	958LLCG	968LRCG	978CCG	3-1/2" LB, 3-1/2" T, 3-1/2" LR, 3-1/2" LL, 3-1/2" C Rigid
939	4"	939LBCG	949TCG	959LLCG	969LRCG	979CCG	4" LB, 4" T, 4" LR, 4" LL, 4" C Rigid



AnyBODY™ 5 Conduit Bodies in One!



#935NM
2" Plastic AnyBODY



Plastic and Aluminum Conduit Bodies

AnyBODY Meets NEC 2008

Section 314.16 Paragraph (C) (2)
for Conduit Bodies with Splices, Taps or Devices.

"Only those conduit bodies that are durably and legibly marked by the manufacturer with their volume shall be permitted to contain splices, taps or devices.

The maximum number of conductors shall be calculated in accordance with 314.16 (B). Conduit bodies shall be supported in a rigid and secure manner."

Raintight only:

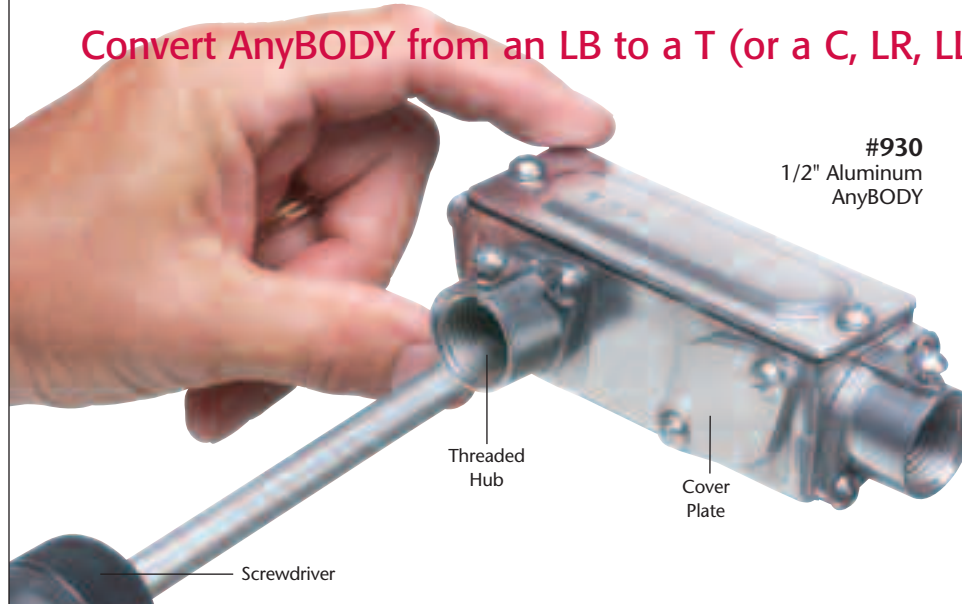
- Glue-on PVC conduit
- Threaded metallic conduit



Arlington

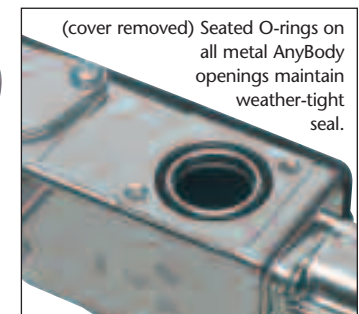
800/233-4717 • www.aifittings.com

Convert AnyBODY from an LB to a T (or a C, LR, LL) – The EASY WAY...



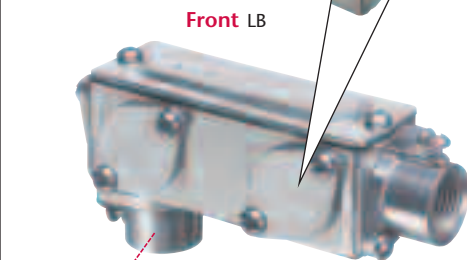
#930
1/2" Aluminum AnyBODY

- 1 Remove cover plate.
- 2 Remove threaded hub.
- 3 Reinstall cover plate and flange in the appropriate opening to convert AnyBODY to the desired configuration.

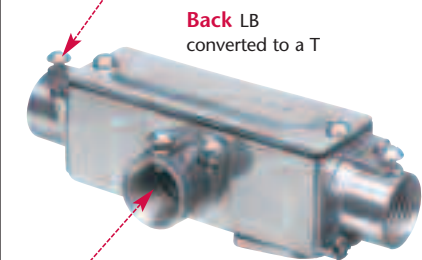


(cover removed) Seated O-rings on all metal AnyBody openings maintain weather-tight seal.

Catalog Number	UPC/DEI/NAED Mfg. #018997	Description Aluminum or Plastic Body	Size	Unit Pkg	Std Pkg
930	17900	Aluminum with combination set-screw/threaded hub for EMT, rigid and IMC	1/2"	10	10
931	17901		3/4"	10	10
932	17902		1"	5	5
933	17903		1-1/4"	2	10
934	17904		1-1/2"	2	10
935	17905	2"	1	5	
936	17906	Aluminum with threaded hub for rigid only	2-1/2"	1	1
937	17907		3"	1	1
938	17908		3-1/2"	1	1
939	17909		4"	1	1
930NM	12500	Plastic includes Three Hubs with Glue-in Conduit Joints	1/2"	10	10
931NM	12501		3/4"	10	10
932NM	12502		1"	5	5
933NM	12503		1-1/4"	2	10
934NM	12504		1-1/2"	2	10
935NM	12505		2"	1	5
936NM	12506		2-1/2"	1	1
937NM	12507		3"	1	1
938NM	12508		3-1/2"	1	1
939NM	12509	4"	1	1	



Front LB



Back LB converted to a T

Remove cover. Substitute supplied hub.